



Timberlake Earth Sanctuary is a peaceful, rustic location where all who come are invited to enter into the timeless presence of the North Carolina countryside.



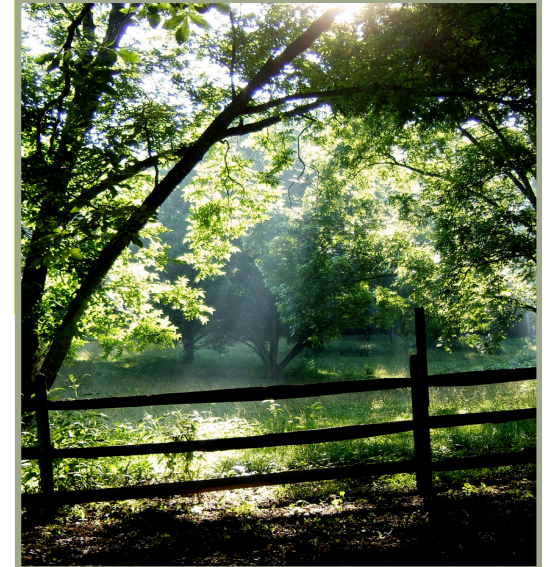
Timberlake Earth Sanctuary is a place where the natural world inspires creativity, evokes wonder, and fosters healing of mind, body and spirit.

Time unwinds, wheels stop spinning, and thoughtful ideas emerge in this sacred space for group and private retreats, weddings, reunions, special ceremonies and celebrations.

Call for more information about rental opportunities:

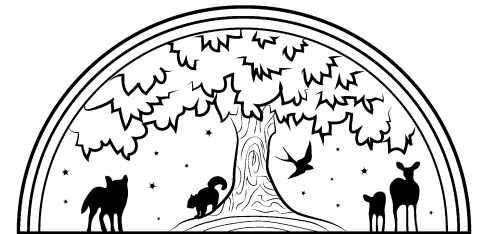
(336) 446-0377

Timberlake Earth Sanctuary
1501 Rock Creek Dairy Road
Whitsett, NC 27377
www.timberlakeearthsanctuary.com



Welcome to Timberlake Earth Sanctuary, a 165-acre nature preserve and spiritual retreat in Guilford County, North Carolina.

With meadows, woods, creeks, ponds, and walking trails, it is a sacred, natural setting for weddings, reunions, retreats, meetings and special celebrations.



Timberlake Earth Sanctuary
www.timberlakeearthsanctuary.com

A Place for Magical Moments

The natural beauty of woods, meadows, ponds and trails provide a quiet, peaceful place for memorable occasions filled with magical moments. Walking trails afford an intimate connection with birds, trees, plants and the occasional wild creature. Wooden bridges and overlooks offer stopping places to contemplate the earth and absorb its healing presence. A small outdoor chapel overlooking Lake Mackintosh provides a resting place for reflection, meditation and prayer. We encourage everyone who visits Timberlake Earth Sanctuary to find their own personal connection with the beauty, wonder and mystery of the natural world.

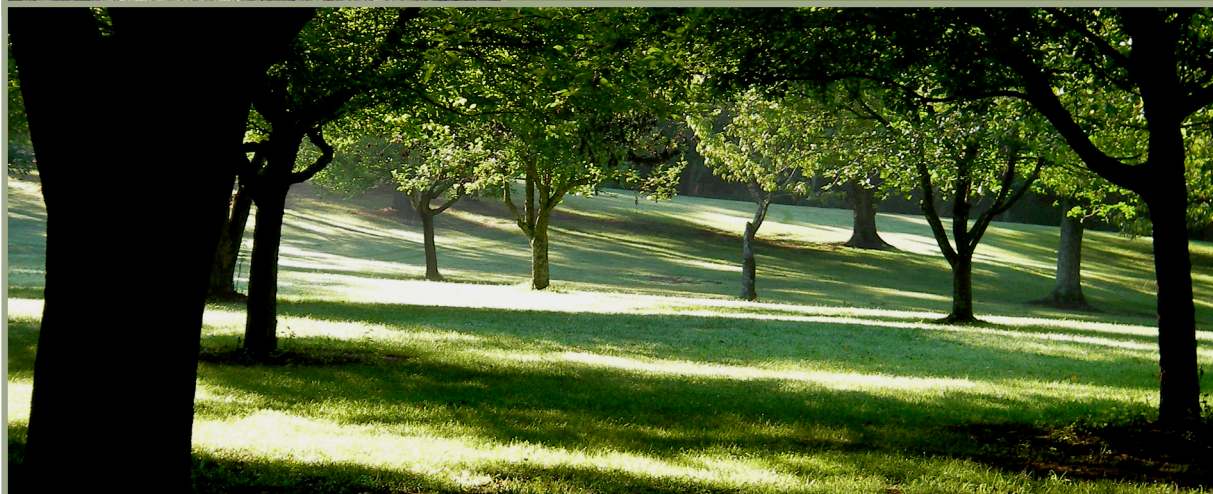


A Place for Weddings and Celebrations

Timberlake Earth Sanctuary offers a sacred, natural setting for weddings, reunions, retreats, meetings, programs and special events.

The TreeHouse by the pond and the Orchard Court with Tent provide opportunities for daytime or evening activities and celebrations.

For smaller ceremonies of fewer than twenty-five, we can offer several additional locations on the land, including our chapel, which overlooks Lake Mackintosh.



We encourage all groups and individuals who visit Timberlake Earth Sanctuary to “travel at nature’s pace” and to include time for earth walks and solo moments in the natural world.

Rental information, scheduling and fees are available by phone or e-mail:

(336) 446-0377

timberlake@timberlakeearthsanctuary.com

(Tours are available by appointment only.)